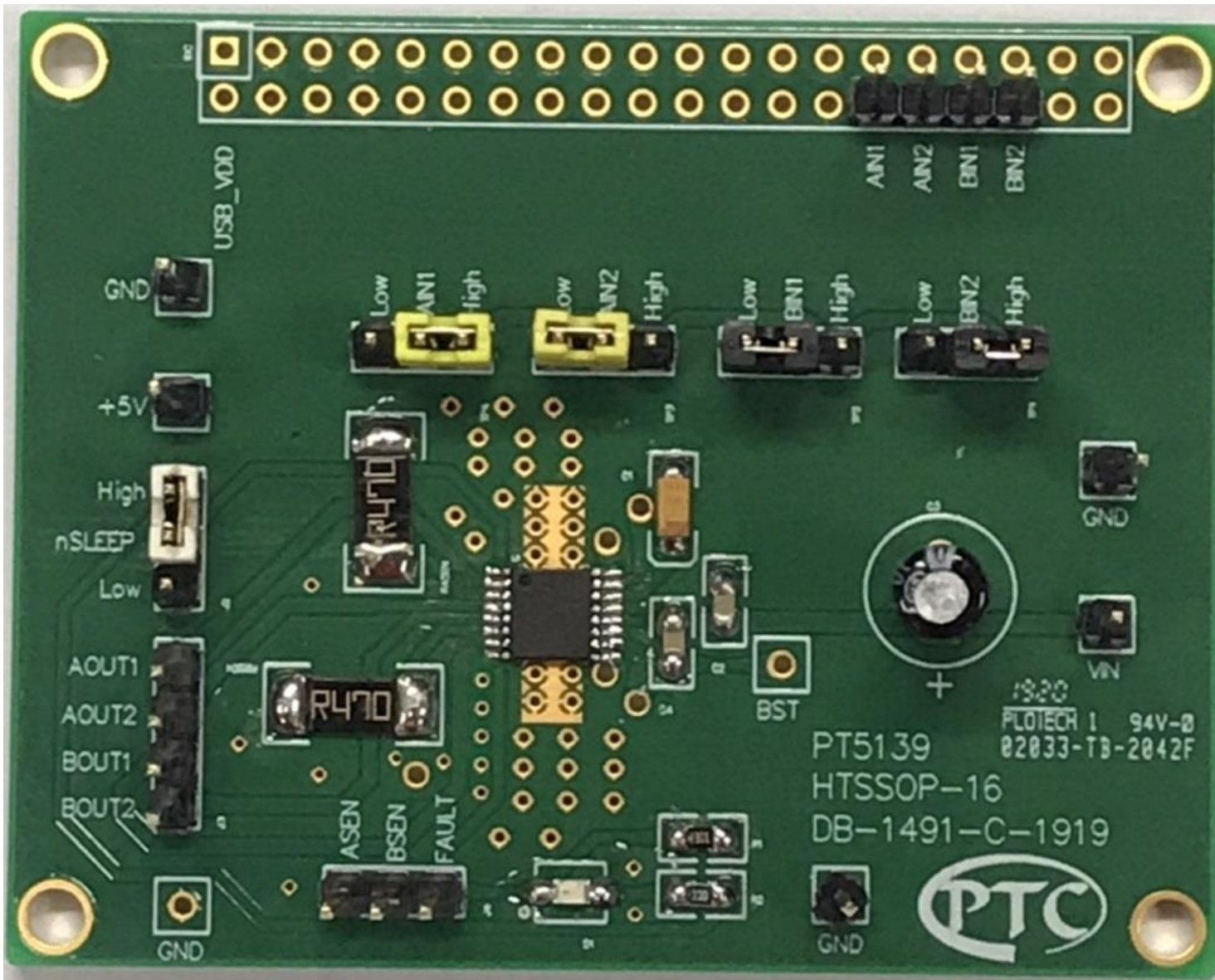


PT5139 (HTSSOP-16) Demo Board Operation

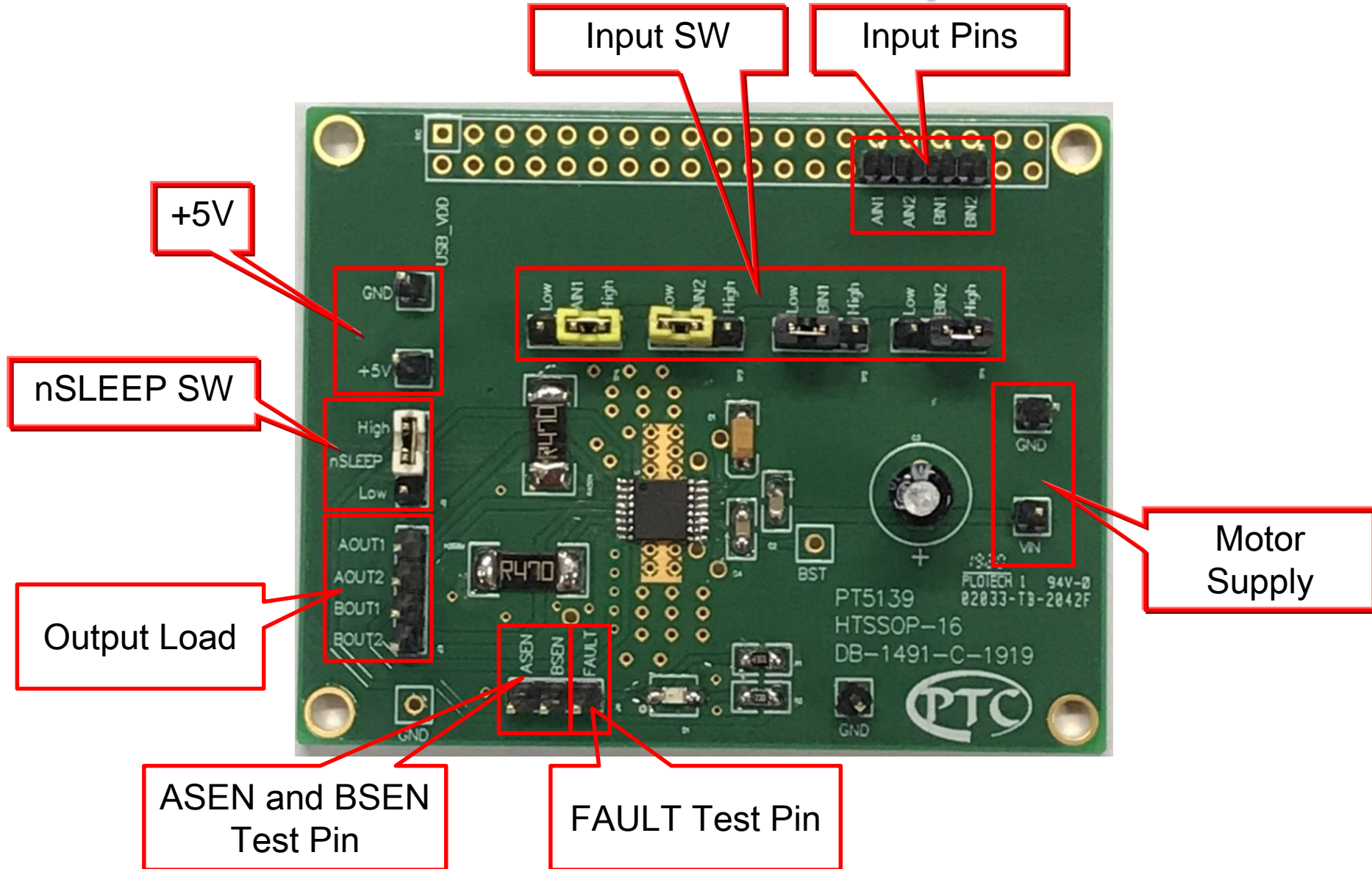
A Leader in Quality and Eco-Friendly IC Solutions for
Car and Consumer Electronics.



PT5139 EV Board Outline



PT5139 EV Board I/O Port Description



PT5139 EV Board I/O Port Explanation

Motor Supply : Please connect 2.7V to 15V power supply at this pin for motor driver.

Input Pins : Logic input pin. These pin control A/B OUT pin. Function table shows the control logic. Please connect these pin to controller.

Input SW : Logic input jumper. If logic input pin controlled by MCU or other controller, please keep these pin and components free.

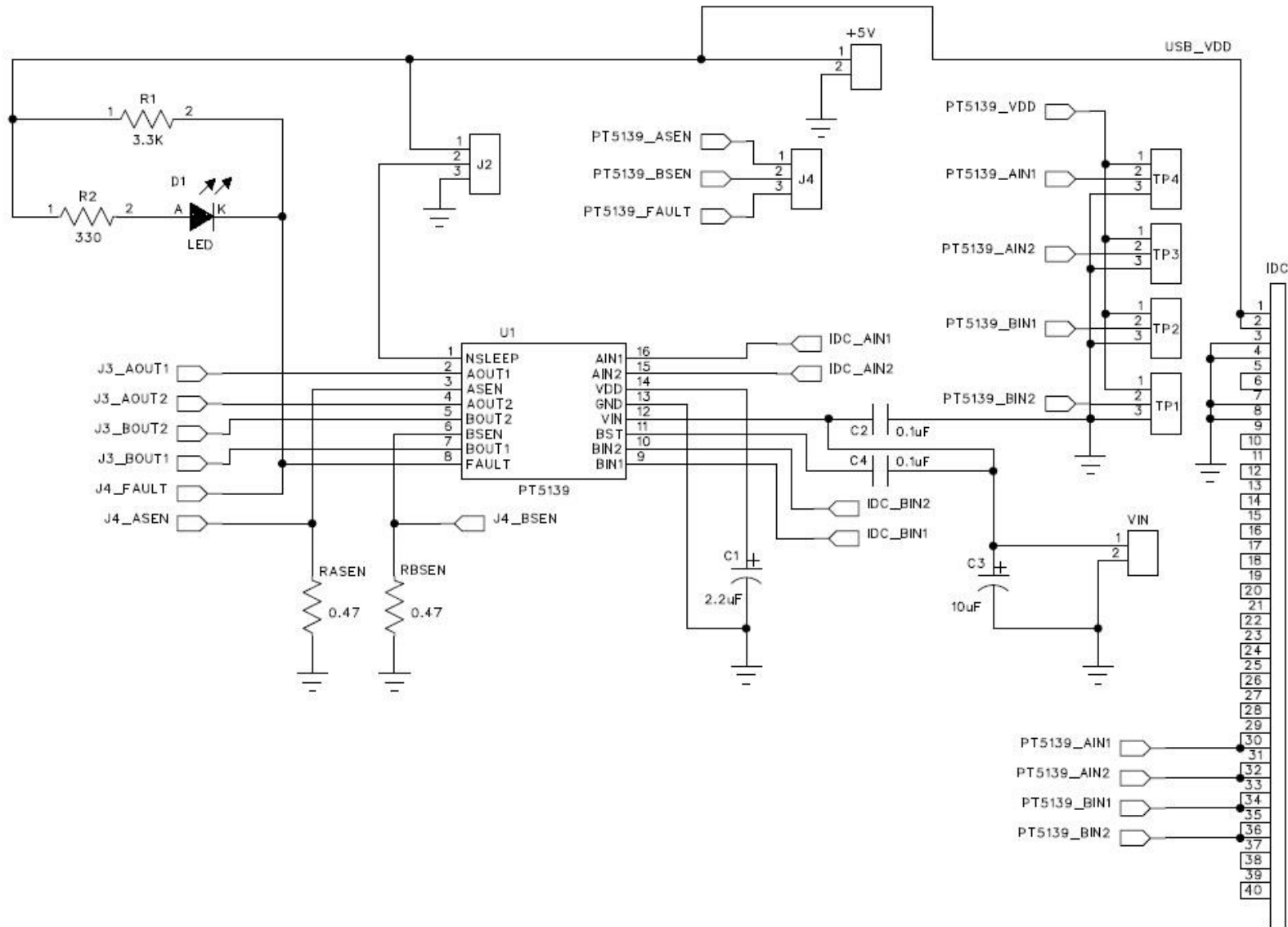
nSLEEP SW : nSLEEP jumper. This jumper can make nSLEEP logic high to enable device, logic low to enter low-power sleep mode and reset all internal logic.

FAULT Test Pins : FAULT pin output. Logic low when in over-temperature fault condition and OCP happen.

ASEN and BSEN Test Pins : Testing pin for ASEN and BSEN.

Onput Load : Motor driver output. Please connect AO1 and AO2 to winding A. Connect BO1 and BO2 to winding B.

PT5139 EV Board Circuit



PT5139 EV Board Input Pins Setting

<u>nSLEEP</u>	A/BIN1	A/BIN2	A/BOUT1	A/BOUT2
H	L	L	High Impedance	High Impedance
	L	H	GND	VIN
	H	L	VIN	GND
	H	H	GND	GND
L	Any	Any	High Impedance	High Impedance