

DESCRIPTION

PT6971 is a boost DC/DC converter with one channel constant current regulator, which provides 10mA to 30mA current for up to 8 LEDs in series. The power supply is from 4V to 15V and the max output voltage is 28V. PT6971 provides both PWM dimming and analog dimming functions. The minimum PWM dimming on time is 125ns, which means 0.25% dimming duty-cycle at 20KHz is available.

PT6971 also provides much protections, such as under voltage lockout, cycle by cycle input current limit, output over voltage protection, flywheel diode open protection, feedback over voltage protection, thermal shutdown protection and so on.

PT6971 operates at fixed 600KHz, allowing the use of tiny external components to save space and cost.

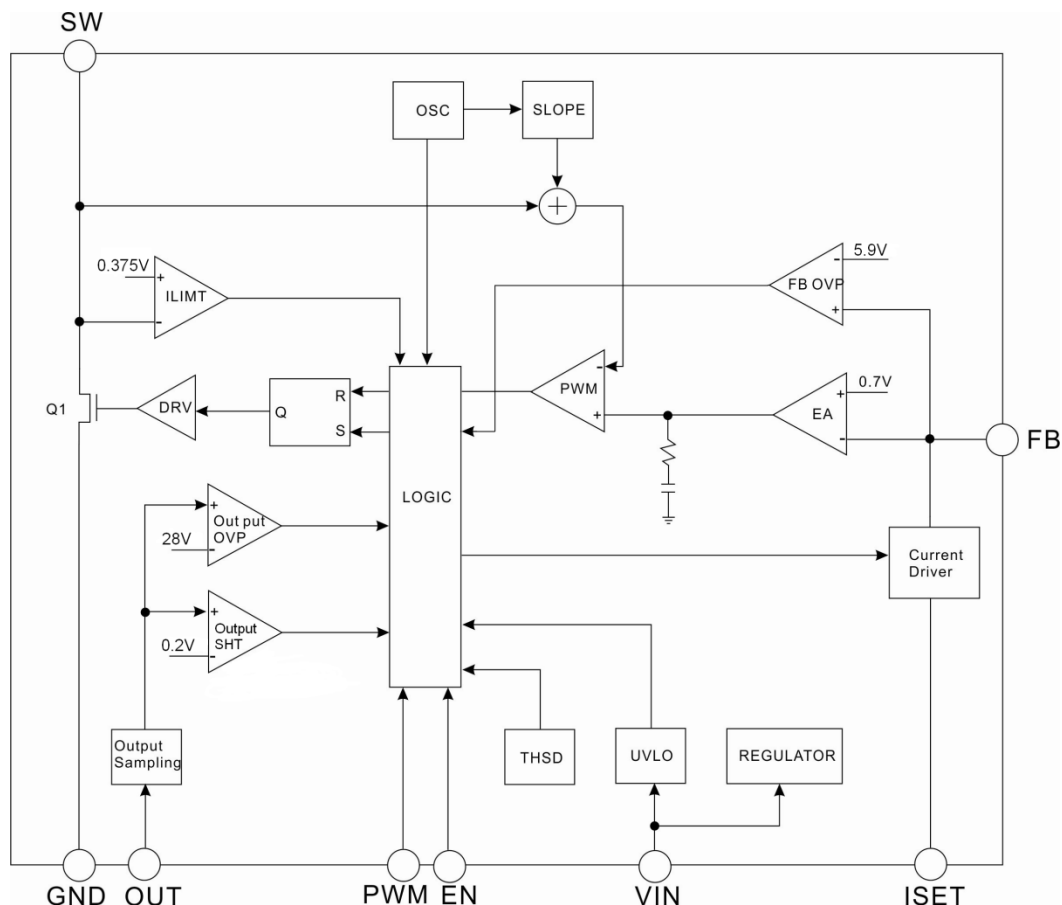
FEATURES

- 4~15V Input Voltage
- 10mA~30mA LED Current with $\pm 3\%$ matching
- Drive Up to 8 LEDs
- 600kHz Switching Frequency
- Typical less than 1uA Standby Current
- 28V Output Over Voltage Protection
- LED Open/Short Protection
- Flywheel Diode Open Protection
- Output Short to GND Protection
- 20kHz 0.25% PWM Dimming Available
- DFN8 Package

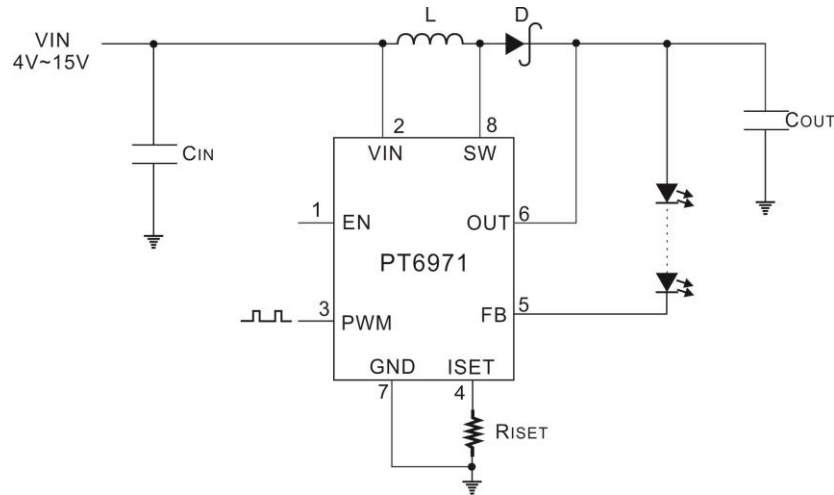
APPLICATIONS

- Digital Cameras Monitor Backlighting
- Cell Phones Monitor Backlighting
- PDAs, Handheld Computers Monitor Backlighting
- Small LCD Displays Backlighting

BLOCK DIAGRAM



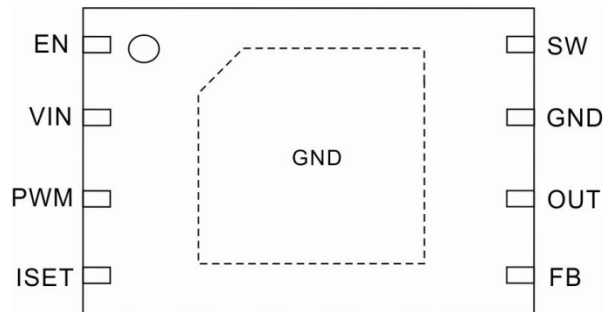
TYPICAL APPLICATIONS



ORDER INFORMATION

Valid Part Number	Package Type	Top Code
PT6971	8 Pins, DFN (2MM*3MM)	6971

PIN CONFIGURATION



PIN DESCRIPTION

Pin Name	Description	Pin No.
EN	Enable Control.	1
VIN	Power supply pin.	2
PWM	PWM Dimming signal input.	3
ISET	LED Current setting terminal, connect a resistor between ISET and GND for LED Current setting.	4
FB	Feedback Voltage input.	5
OUT	Over Voltage Protection input.	6
GND	Ground.	7
SW	Switching terminal.	8
GND	Ground.	Exposed PAD

APPLICATION INFORMATION

OPERATION

PT6971 integrates a dc-dc boost convertor and a linear current driver to regulate the current of white LED cluster. Peak current mode topology and fixed switching frequency operation provide excellent line and load regulation. It converts the input voltage to a higher output voltage to driving LEDs. The LED strings are connected to a linear current driver where the current level is set by an external resistor between ISET and GND. The boost output voltage is controlled by the FB pin voltage, which is equal to an internal reference voltage (0.7V typical).

To control the brightness of LED string, PT6971 provides both PWM and analog dimming functions. Fast current driver ON/OFF response allows minimum 125ns PWM pulse width operating, which means 0.25% duty cycle on 20 kHz dimming frequency is available.

SETTING THE LED CURRENT

The LED current can be adjusted by the resistor R_{ISET} between ISET pin and GND. The current through the LEDs is given by the equation:

$$I_{LED} = \frac{1000 \times 0.6V}{R_{ISET}}$$

Where, 1000 is a constant, 0.6V is the fixed reference voltage of ISET pin. In order to get accurate LED current, 1% precision resistor is recommended.

SOFT-START

PT6971 integrates an internal soft-start circuit, which clamp the output of the Error Amplifier effectively during start-up. The soft-start function prevents rush current at turning on. The soft-start time is approximately equal to 1ms.

OUTPUT OVER-VOLTAGE PROTECTION

In some cases the LEDs may fail and the load is open, this resulting in the feedback voltage always remains zero. The power MOSFET will switch at maximum duty cycle and boost the output voltage exceeding the absolute maximum ratings. To avoid destroying the IC, PT6971 integrates Output Overvoltage Protection function. If the output exceeds 28V, the power MOSFET will stop switch until the output falls back to 26V.

OUTPUT OVER-CURRENT PROTECTION

In case of setting wrong R_{ISET} value or ISET pin short to GND, PT6971 will turn off the convertor and constant current driver, to protect LED string and IC from overheat or damage. The threshold of the R_{ISET} value is 5k Ω in typical case. Once the abnormal condition removed, PT6971 will continue working automatically.

FLYWHEEL DIODE OPEN PROTECTION

In the case of external flywheel diode opened, the coil or internal power MOS may be destroyed. Therefore, as such an error happens and VOUT falls below 0.2V, PT6971 turns off the converter and constant current driver, to prevent the coil and the IC from damaging. Similarly, when the output shorted to ground, there will be the same reaction as above.

FB OVER-VOLTAGE PROTECTION

When the voltage of FB is higher than 5.9V, PT6971 will turn off the converter and constant current driver after 100µs delay. Therefore, PT6971 is prevented from overheating even if OUT and FB are shorted.

When one LED is shorted, PT6971 will regulate the FB voltage to 0.7V. Therefore the output voltage will decrease by the value of which drops on the shorted LED, and the converter still operate normally.

If the FB pin is shorted to OUT, there are two different reactions according to the VIN voltage. If VIN is higher than 5.9V, the converter and constant current driver will turn off. If VIN is below 5.9V, IC works normally.

THERMAL SHUTDOWN

In order to prevent damage from high junction temperature, PT6971 integrates thermal shutdown function. When the junction temperature of device rises up to 150°C (typical), PT6971 will disable the boost converter and output constant current driver. The device will automatically recover when the junction temperature falls below 120°C (typical).

ENABLE FUNCTION

PT6971 provides enable function. When the voltage of EN pin is higher than 1.4V, PT6971 is active, and when the voltage is lower than 0.5V, the device is turned off and the shutdown current is lower than 1µA. Additionally, EN pin is pulled low by an internal 100kΩ resistor.

DIMMING CONTROL

There are two dimming methods available in PT6971. One method is PWM dimming that inputs a digital signal to the PWM terminal. Another method is analog dimming by applying an analog voltage to the ISET terminal.

PWM Dimming

With an external PWM signal (20 kHz, typ.) applied at the PWM pin, the converter is turned on or off following the PWM signal. The average LED current increases proportionally with the duty cycle of the PWM signal. The minimum on-time of the PWM signal is 125ns, which means a 0.25% dimming ratio at 20 kHz is available.

Analog Dimming

Analog dimming is implemented by applying a DC voltage to the ISET pin via a resistor as the below figure shows. The voltage of the ISET pin is fixed at 0.6V by the internal circuit. When the DC voltage increases, the current flowing into the ISET pin will decrease, so the LED current also decreases. The LED current can be calculated as below.

$$I_{LED} = \frac{1000 \times 0.6V}{R1} + \frac{1000 \times (0.6V - V_{DC})}{R2}$$

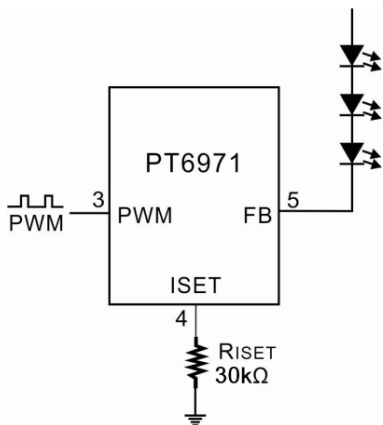


Fig 1 PWM Dimming Using Digital Signals

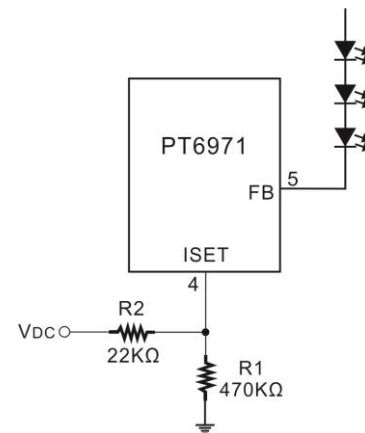


Fig 2 Analog Dimming Using DC Voltage



ABSOLUTE MAXIMUM RATINGS

Parameter	Symbol	Rating	Unit
V _{IN} , SW, OUT,FB to GND	-	-0.3~+36	V
EN, ISET,PWM to GND	-	-0.3~+6	V
Operating Temperature	T _{OPR}	-40~+105	°C
Storage Temperature	T _{STG}	-40~+150	°C

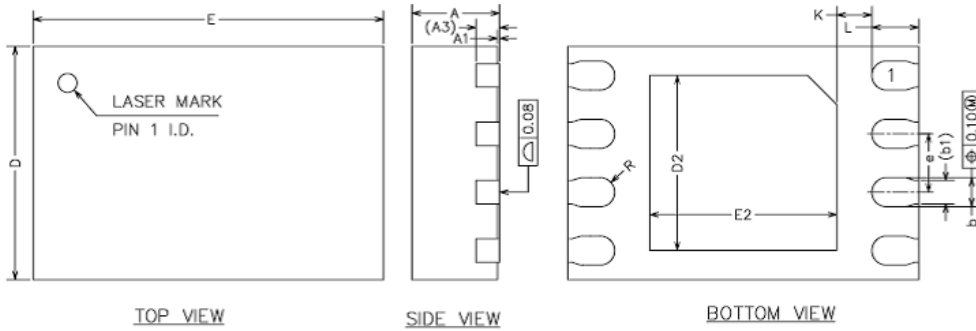
ELECTRICAL CHARACTERISTICS

(Unless otherwise specified, V_{IN}=V_{EN}=5V, T_a=25°C)

Parameter	Symbol	Conditions	Min.	Typ.	Max.	Unit
Operating input voltage	V _{IN}	DC input voltage	4		15	V
Supply Shutdown current	I _{INSD}	V _{EN} =0V		0.1	10	μA
Supply Quiescent current	I _{INQS}	V _{EN} =H, V _{PWM} =0V		1.5	-	mA
Supply Active current	I _{INAC}	V _{EN} =H, V _{PWM} =H		2.5	-	mA
V _{IN} under voltage lockout	UVLO	V _{IN} falling	2.3	3.5	3.7	V
Under voltage lockout hysteresis				200		mV
ISET voltage	V _{ISET}		582	600	618	mV
LED current range	I _{LED}		10		30	mA
LED current accuracy		I _{LED} =10mA~30mA			±3	%
Feedback voltage	V _{FB}			0.7		V
Switching frequency	f _{SW}		500	600	700	kHz
Maximum duty cycle	D _{MAX}	V _{FB} =0V		90		%
Switch on-resistance	R _{ON}			0.5		Ω
Switch current limit	I _{SW}			750		mA
Switch leakage current	I _{SW_LC}	V _{SW} =30V		0.1	10	μA
EN high input voltage	V _{ENH}	V _{EN} rising	1.4			V
EN low input voltage	V _{ENL}	V _{EN} falling			0.5	V
EN pin pull down resistance	R _{EN}			100		kΩ
PWM high input voltage	V _{PWMH}	V _{PWM} rising	1.4			V
PWM low input voltage	V _{PWML}	V _{PWM} falling			0.5	V
PWM pin pull down resistance	R _{PWM}			100		kΩ
Minimum PWM on time	T _{PWM_ON_MIN}			125		ns
Over current protection threshold	R _{OCP}	R between ISET and GND		5		kΩ
Output Over Voltage Protection	V _{OVP}	V _{OUT} rising		28		V
V _{OUT} OVP hysteresis				2		V
FB Over Voltage Protection	V _{FB_OVP}	V _{FB} rising		5.9		V
FB Over Voltage Protection hysteresis				0.5		V
Thermal shutdown	T _{SD}			150		°C
Thermal shutdown hysteresis Temperature	T _{HYS}			30		°C
Flywheel Diode Open Protection	V _{FOP}	V _{OUT} Falling		0.2V		V
Output Short to GND Protection	V _{SHT}	V _{OUT} Falling		0.2V		V

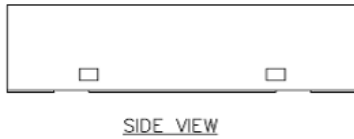
PACKAGE INFORMATION

8 PINS, DFN



COMMON DIMENSIONS
(UNITS OF MEASURE=MILLIMETER)

SYMBOL	MIN	NOM	MAX
A	0.70	0.75	0.80
A1	0	0.02	0.05
A3	0.20REF		
b	0.20	0.25	0.30
b1	0.20REF		
D	1.90	2.00	2.10
E	2.90	3.00	3.10
D2	1.40	1.50	1.60
E2	1.50	1.60	1.70
e	0.40	0.50	0.60
K	0.20	-	-
L	0.35	0.40	0.45
R	0.09	-	-



IMPORTANT NOTICE

Princeton Technology Corporation (PTC) reserves the right to make corrections, modifications, enhancements, improvements, and other changes to its products and to discontinue any product without notice at any time.

PTC cannot assume responsibility for use of any circuitry other than circuitry entirely embodied in a PTC product. No circuit patent licenses are implied.

Princeton Technology Corp.
2F, 233-1, Baociao Road,
Sindian, Taipei 23145, Taiwan
Tel: 886-2-66296288
Fax: 886-2-29174598
<http://www.princeton.com.tw>